



GARDEN DESIGN PACKET INSTRUCTIONS

Sullivan 180 is a non-profit organization dedicated to building a healthy community through people, places, and policy; with an intentional focus on prevention and empowering a healthier generation. We are committed to change by degrees; working with partners, schools, and communities through a grassroots and inclusive approach where everyone can participate in turning around the health of our county.

To this end Sullivan 180 offers grants, technical assistance; and a variety of programs and resources to support our mission; and the efforts and initiatives of our community to enhance health outcomes.

All applicants requesting grant funding for the installation of new gardens must submit a completed **GARDEN DESIGN PACKET**. It is a tool to help plan a garden that makes the best use of location, incorporates a variety of appropriate plant materials, and uses sound design elements. A separate packet must be submitted for **each proposed new garden**.

SITE ASSESSMENT

The site assessment will help determine the suitability and sustainability of the selected site. Complete a soil assessment and call 811 "Dig Safely New York"; the results may indicate that the site is unsuitable for a new garden, resulting in an alternate plan. A consultation or site visit from Sullivan 180 horticulture staff will help to determine if the area is appropriate.

PLANT LIST

A chart is provided where all the plants in the garden design should be listed. Assign a number to each plant for identification purposes. List the type, color/interest, time of bloom, deer resistance, number of plants, size of container (or tree trunk diameter) and estimated cost. A list of pricing estimates is enclosed as a resource. Sullivan County is zone 5 for perennials to survive the winter – make sure to check the tag!

Sullivan 180 Beautification team and the local garden centers are excellent resources to use when considering the right plant for your design.

GARDEN DESIGN PLAN

Graph paper is provided to assist with the design. Include a directional compass and indicate with an arrow NORTH. Indicate the scale (i.e. 1 square = 6"), and the dimensions of the proposed garden (i.e. total area 25' by 50') specify hardscape details (i.e. bluestone path or stone wall, trellis, decorative boulders), new plant placement and existing plants that will remain in the garden. New plant placement should be identified as a number that corresponds with the number on the plant list. A sample garden design, along with tips for designing your garden, is enclosed.

For additional information, please refer to "How to Start a Garden" on our website Sullivan180.org.

For more information or to schedule a site visit contact Carmela Hugel, Beautification Program Manager at (845) 295-2680 or email carmela@sullivan180.org.



GARDEN DESIGN PACKET

SITE ASSESSMENT

Applicant: _____

Garden Name / Location: _____

Is this a new garden? Yes No If no, when was it last maintained? _____

Is the proposed garden in: Full sun - 6 hours or more
 Part Sun - 4 to 6 hours direct sun, including afternoon sun
 Part Shade - 4 to 6 hrs direct sun before midday
 Full shade - less than 4 hours of direct sun per day

Is the garden near a: Wall Road Sidewalk
 Overhead Wires Buildings/Structures Sign
 Parking Lot Under an Overhang Wet Area/Creek/River
 Underground Pipes/Wires New Construction Tree/Shrubs

Is water available on the site? Yes No

Water Source is: Faucet / Spigot Creek / Stream / River Water Truck or Gator
 Rain Barrell

If **No**, how do you plan to water garden?

Are there any invasive plants present?

Japanese Knotweed Mugwort Garlic Mustard
 Barberry Burning Bush Honey Suckle
 Other: _____

SOIL CONDITIONS:

Texture of Soil:

Clay
 Sand
 Loam (dark rich looking soil)

Soil Compaction:

Severe
 Moderate
 Not Compacted

Drainage: after 1/2" or more of rain is the area:

Wet
 Well Drained
 Poorly Drained
 Pooling

Other Soil Considerations:

Recent Construction
 Erosion Evident
 Presence of Construction Debris
 Road Salt

Will the site be impacted by mowing? Yes No

Will the site be impacted by snow plowing? Yes No

Is there accessibility for utility vehicles? Yes No

IMPORTANT TIPS:

- *Most areas of Sullivan County are USDA Hardiness Zone 5. Higher elevations may be Zone 4.*
- *Before you dig, call 811 "Dig Safely New York"*
- *Consider a raised garden bed 12" - 18" deep if the soil is unsuitable for planting.*
- *Natural mulch is suggested and most effective visually in landscapes.*

PLANT LIST

APPLICANT: _____

GARDEN NAME/LOCATION: _____

PLANT NAME <small>Example: Hydrangea 'Annabelle'</small>	KEY	PLANT TYPE*	COLOR/ INTEREST	Time of Bloom	DEER RESIST? Yes/No	# OF PLANTS	Size Pot	UNIT PRICE	TOTAL COST
	1								
	2								
	3								
	4								
	5								
	6								
	7								
	8								
	9								
	10								
	11								
	12								
	13								
	14								

TOTAL:

*PLANT TYPE: T = TREE; S = SHRUB; P = PERENNIAL; A = ANNUAL

PRICING ESTIMATES FOR GARDENING PROJECTS

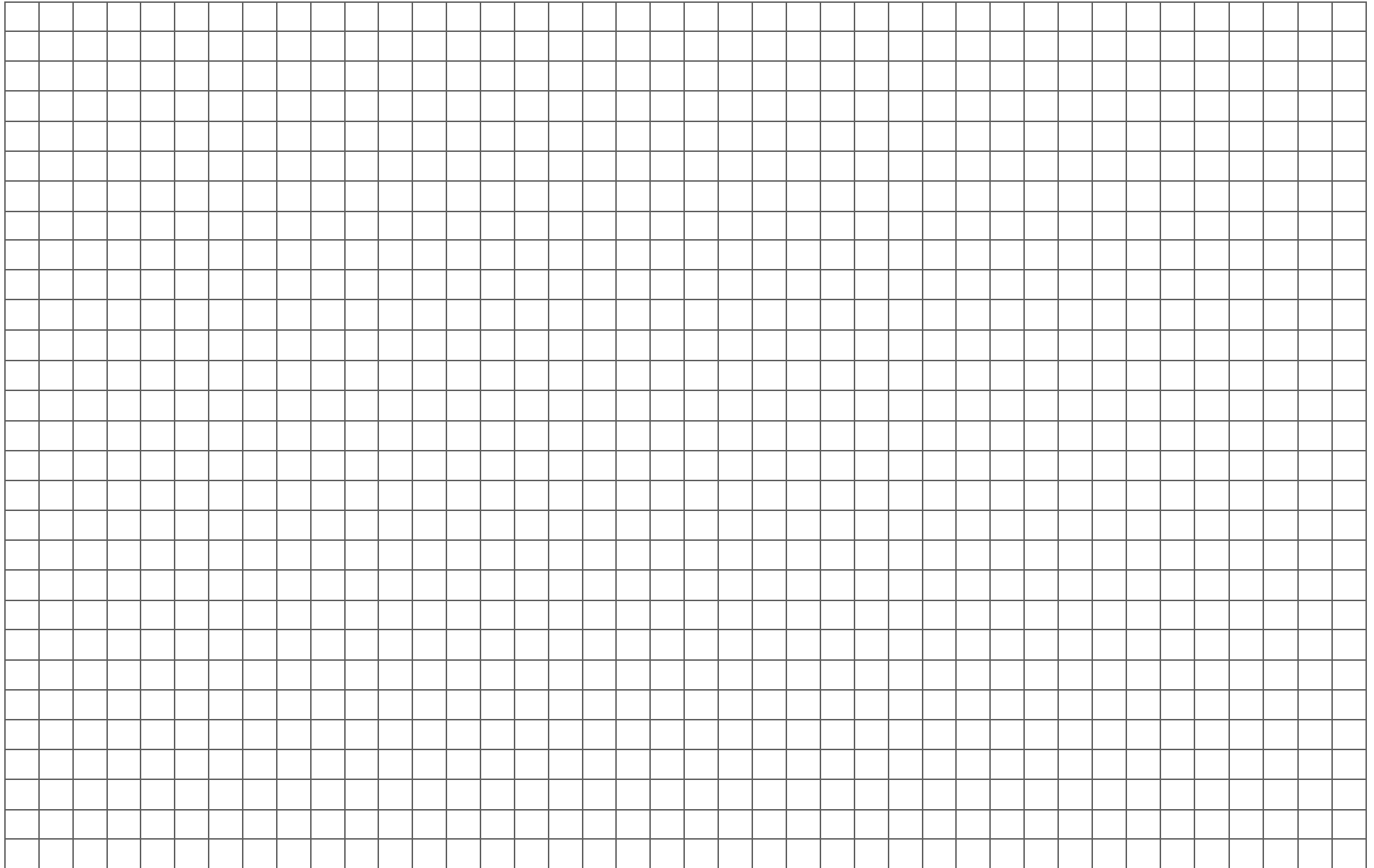
Sullivan 180 has surveyed local businesses and offers this guide to estimate the cost of creating and installing a typical garden. For a more accurate price and plant availability, visit or call your local garden center for assistance.

TREES	
5 gallon	\$39 - \$79
7 gallon	\$79 - \$109
10 gallon	\$109 - \$139
1 ¼" caliper	\$139 - \$199
2" caliper	\$199 - \$225
SHRUBS	
1 gallon	\$14 - \$29
3 gallon	\$26 - \$29.75
5 gallon	\$39 - \$45
PERENNIALS	
1 gallon	\$8 - \$15
2 gallon	\$11 - \$18
3 gallon	\$13 - \$20
ANNUALS	
4-pack	\$1.49 - \$2
6-pack	\$1.99 - \$3
4" pot	\$2.65 - \$4
Flat (4 or 6-packs – up to 36 plants)	\$11.75 - \$14
POTTING SOIL	
1.5-2.0 Cubic Foot Bag	\$9 - 11
2.5 Cubic Foot Bag	\$14 & up
FERTILIZER	
Smart Release (such as Osmocote®) 1.5–4.5 lbs	\$5 -30
Water Soluble (such as Miracle Grow) 1.5-5 lbs	\$4 -11
MULCH & TOPSOIL	
Double Ground Mulch	\$24–30 a yard
Topsoil (garden mix)	\$30-40 a yard
Topsoil (grass mix)	\$20-35 a yard

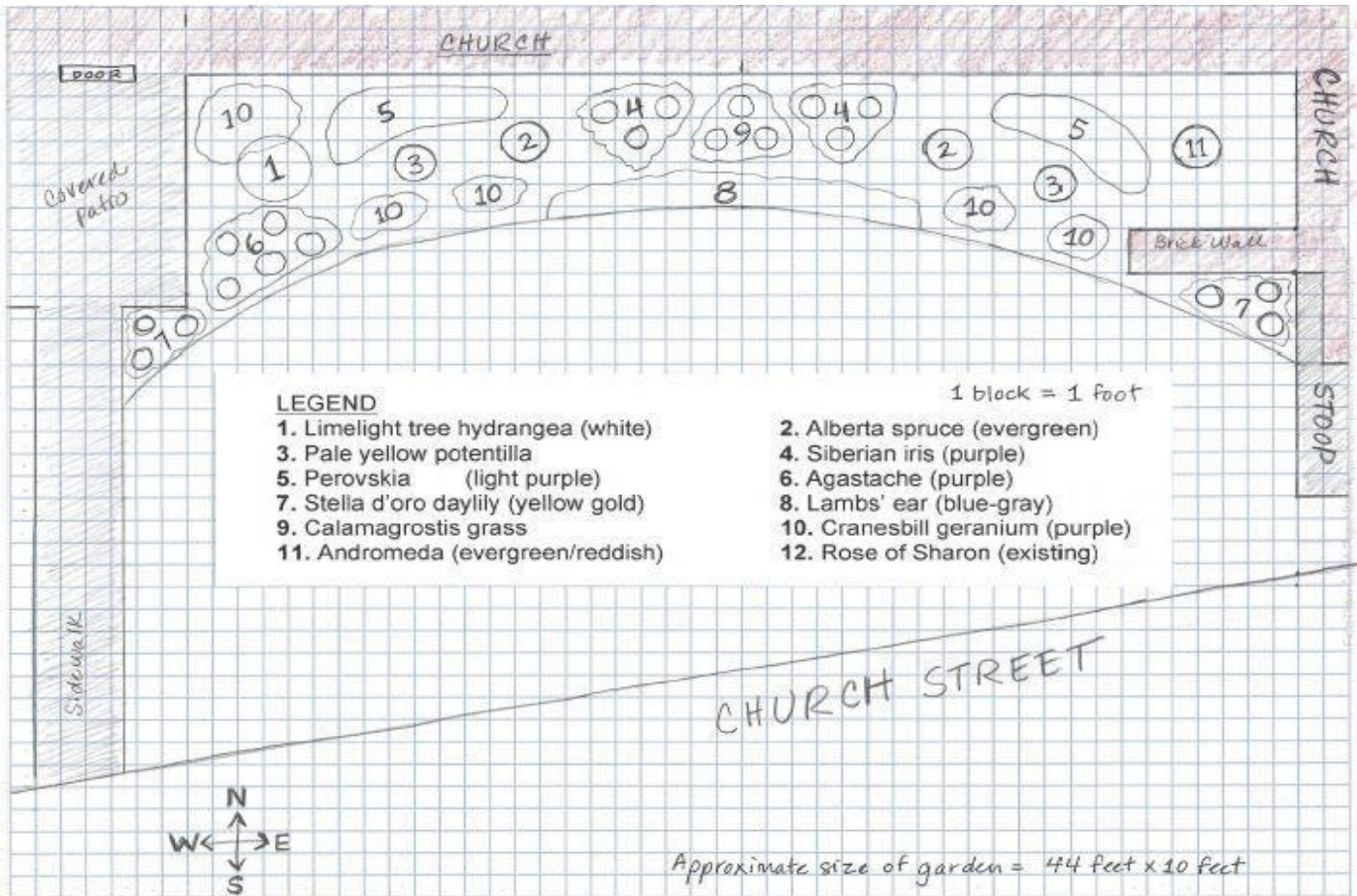
GARDEN DESIGN PLAN

APPLICANT: _____

GARDEN NAME/LOCATION: _____



SAMPLE GARDEN DESIGN PLAN



INSTRUCTIONS

- Include the overall dimensions of the garden.
- Indicate the scale of your drawing.
- Include a directional compass indicating north.
- Show the location of any existing buildings, walkways, fencing or other hardscape.
- Show any existing plants that will remain.
- Indicate where each new plant will be located using the corresponding number on the plantlist.

TIPS FOR DESIGNING YOUR GARDEN

- Design a garden that offers year-round interest (spring bulbs, fall foliage color, evergreens for winter, etc.)
- Select plants appropriate for the site (sun vs. shade, drought tolerance, deer resistance, etc.)
- Use a variety of sustainable, long lived plant material. Including trees, shrubs, and perennials.
- Include annual flowers whose bright colors and long bloom will make a showing all summerlong.
- Avoid invasive species and use native plants wherever possible.
- Use creativity with design and layout, consider mass planting for more impact!
- Call or email Sullivan 180 for design suggestions.